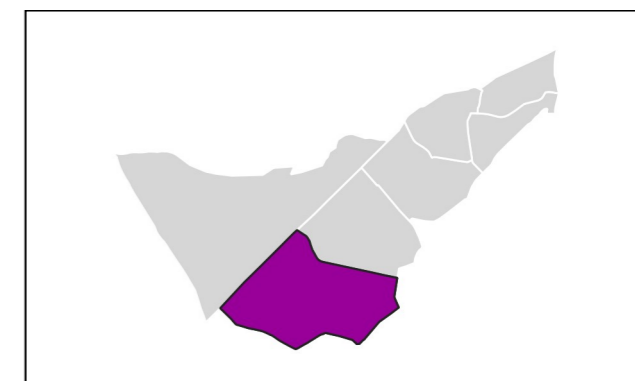
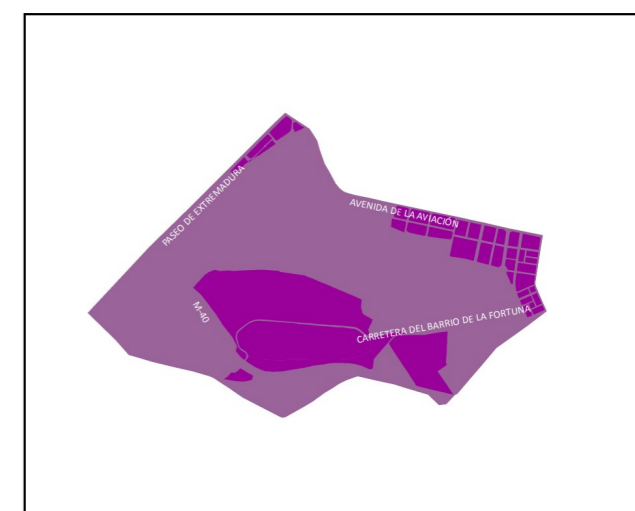


### 10 Latina

Ag\_MAD\_Madrid\_C\_Ld\_10\_6  
8\_1R\_10\_6



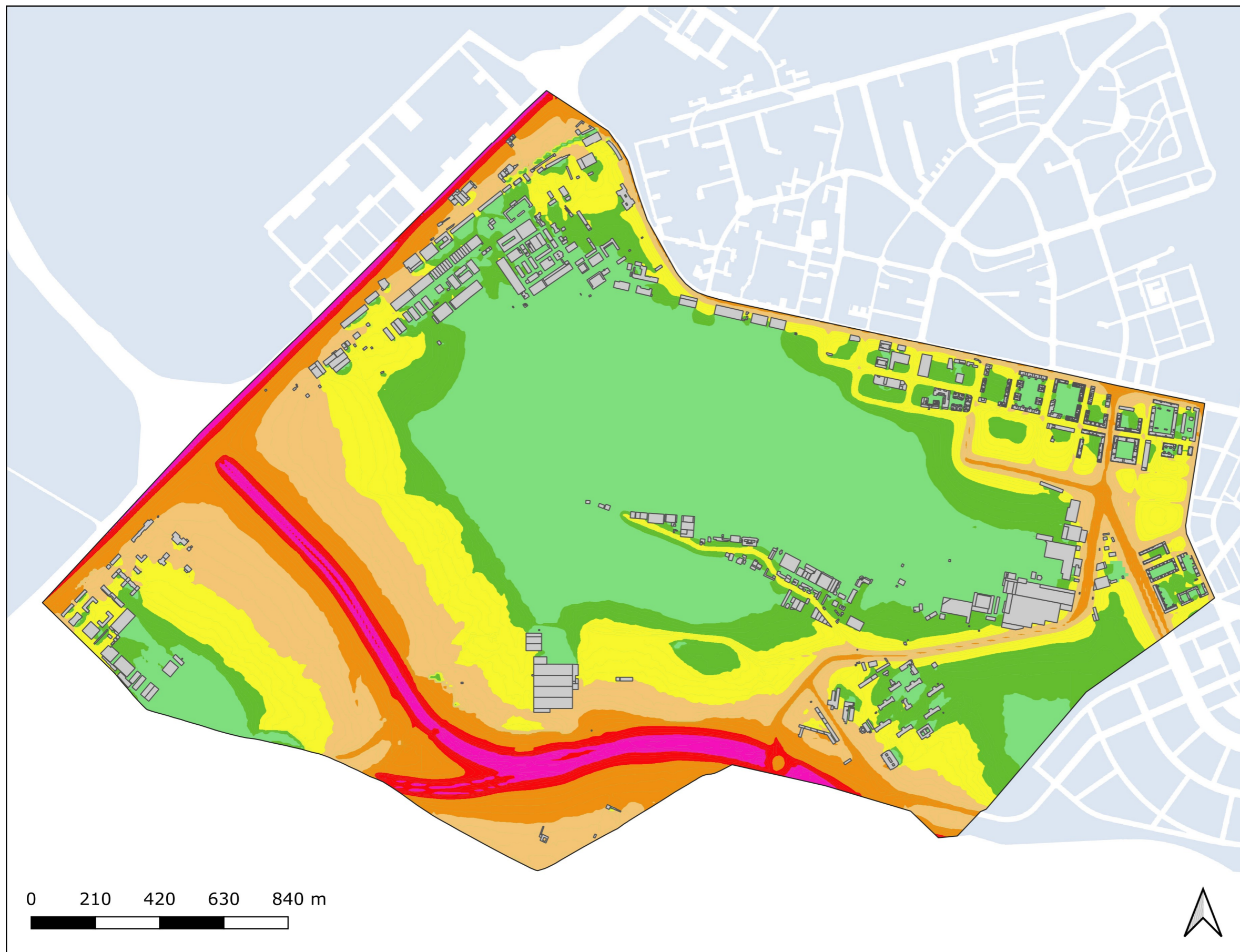
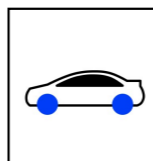
| Población Expuesta     |                         |                        |
|------------------------|-------------------------|------------------------|
| Barrio                 | L <sub>d</sub>          |                        |
|                        | Rango de Exposición dBA | Nº Personas (centenas) |
| 10.6<br>Cuatro Vientos | < 55                    | 33                     |
|                        | 55 - 60                 | 19                     |
|                        | 60 - 65                 | 7                      |
|                        | 65 - 70                 | 0                      |
|                        | 70 - 75                 | 0                      |
|                        | > 75                    | 0                      |



**L<sub>d</sub>**

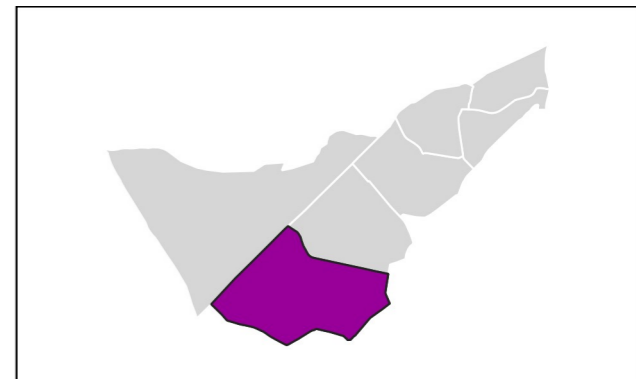
- < 50 dB(A)
- 50-55 dB(A)
- 55-60 dB(A)
- 60-65 dB(A)
- 65-70 dB(A)
- 70-75 dB(A)
- > 75 dB(A)

- Edificio
- Parcela
- Barrera acústica
- Límite administrativo



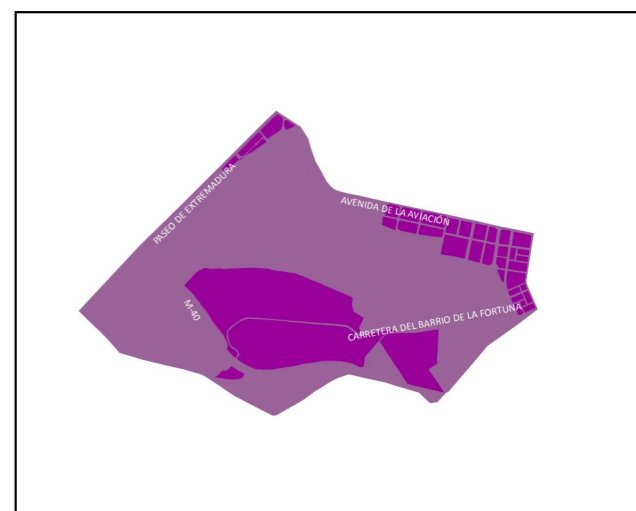
### 10 Latina

Ag\_MAD\_Madrid\_C\_Le\_10\_6  
8\_2R\_10\_6



**Población Expuesta**

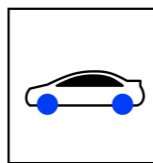
| Barrio                 | $L_e$                   |                        |
|------------------------|-------------------------|------------------------|
|                        | Rango de Exposición dBA | Nº Personas (centenas) |
| 10.6<br>Cuatro Vientos | < 55                    | 38                     |
|                        | 55 - 60                 | 17                     |
|                        | 60 - 65                 | 4                      |
|                        | 65 - 70                 | 0                      |
|                        | 70 - 75                 | 0                      |
|                        | > 75                    | 0                      |



**$L_e$**

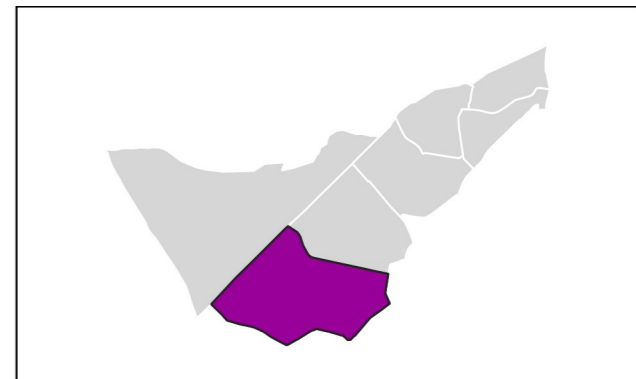
- < 50 dB(A)
- 50-55 dB(A)
- 55-60 dB(A)
- 60-65 dB(A)
- 65-70 dB(A)
- 70-75 dB(A)
- > 75 dB(A)

- Edificio
- Parcela
- Barrera acústica
- Límite administrativo



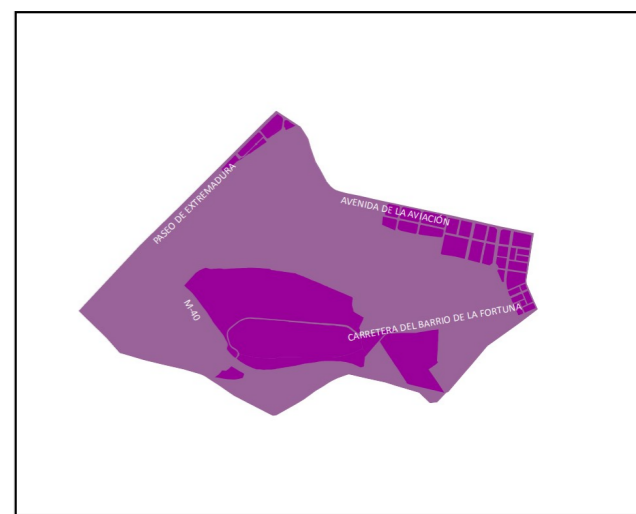
### 10 Latina

Ag\_MAD\_Madrid\_C\_Ln\_10\_6  
8\_3R\_10\_6



**Población Expuesta**

| Barrio                 | L <sub>n</sub>          |                        |
|------------------------|-------------------------|------------------------|
|                        | Rango de Exposición dBA | Nº Personas (centenas) |
| 10.6<br>Cuatro Vientos | < 50                    | 46                     |
|                        | 50 - 55                 | 11                     |
|                        | 55 - 60                 | 3                      |
|                        | 60 - 65                 | 0                      |
|                        | 65 - 70                 | 0                      |
|                        | > 70                    | 0                      |



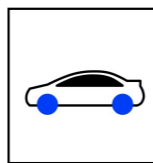
**L<sub>n</sub>**

- < 50 dB(A)
- 50-55 dB(A)
- 55-60 dB(A)
- 60-65 dB(A)
- 65-70 dB(A)
- > 70 dB(A)

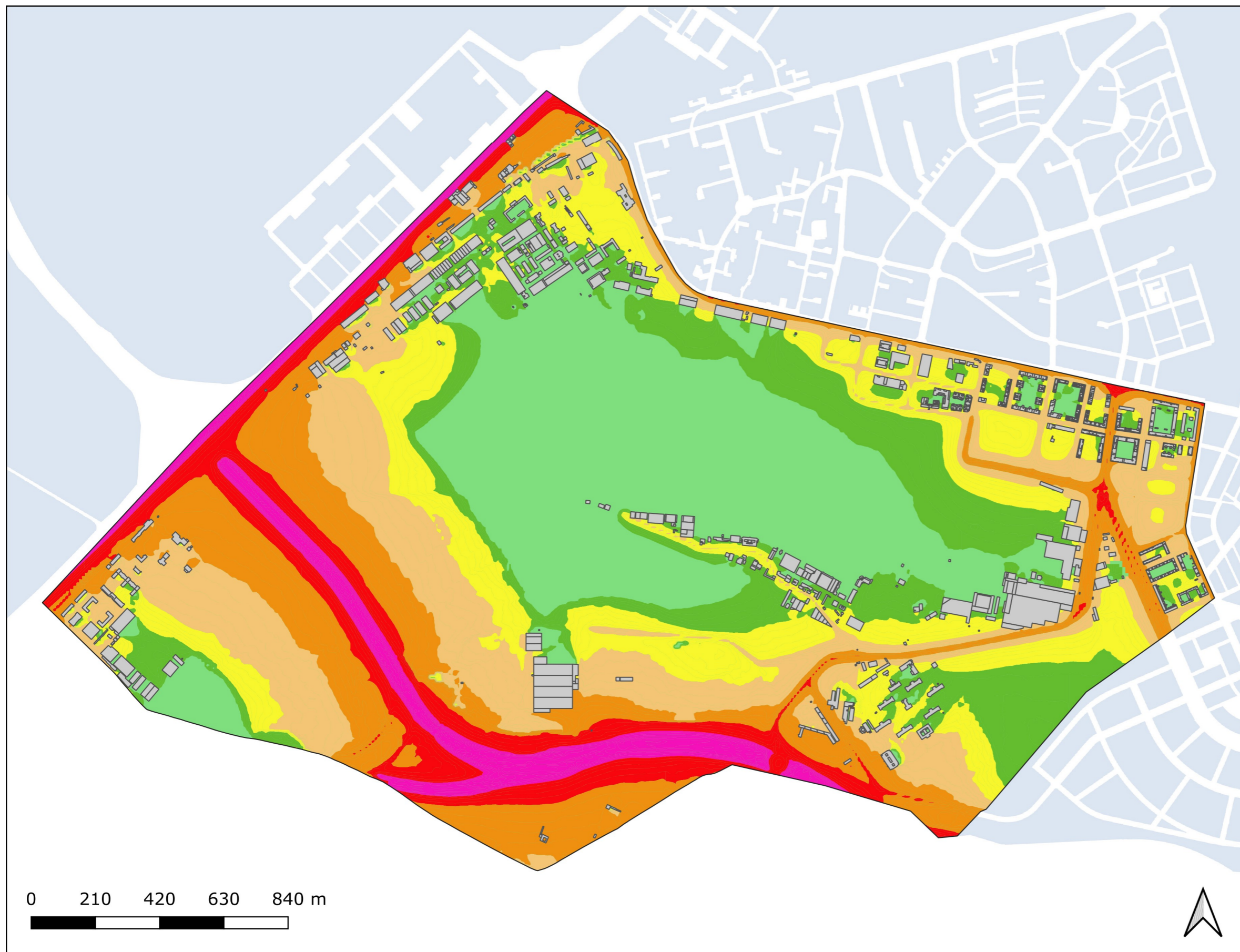
- Edificio
- Parcela
- Barrera acústica
- Límite administrativo



# Mapa Estratégico de Ruido Madrid 2021

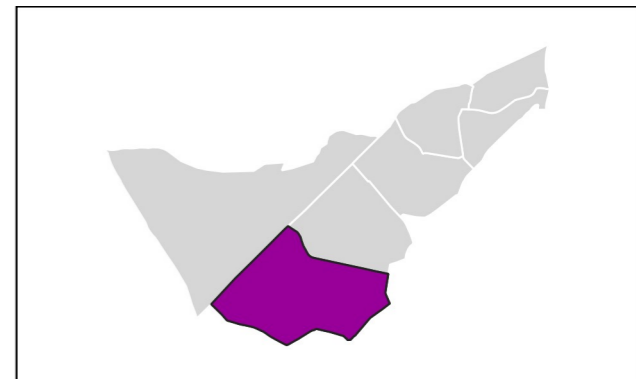


## Nivel Continuo Equivalente Día - Tarde - Noche ( $L_{den}$ )

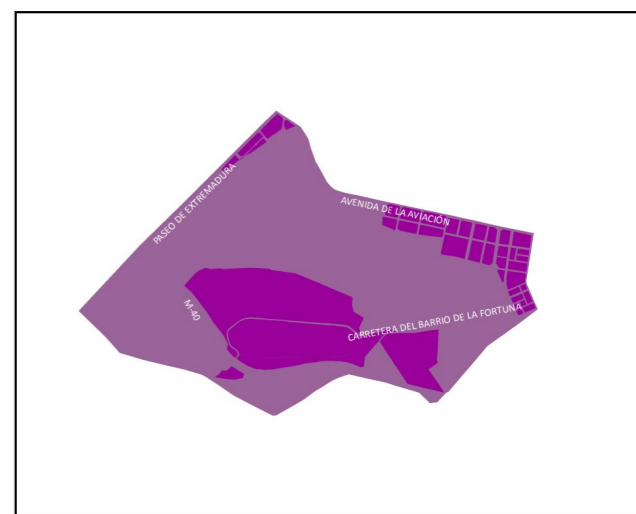


### 10 Latina

Ag\_MAD\_Madrid\_C\_Lden\_10\_6  
8\_4R\_10\_6



| Población Expuesta     |                         |                        |
|------------------------|-------------------------|------------------------|
| Barrio                 | $L_{den}$               |                        |
|                        | Rango de Exposición dBA | Nº Personas (centenas) |
| 10.6<br>Cuatro Vientos | < 55                    | 29                     |
|                        | 55 - 60                 | 19                     |
|                        | 60 - 65                 | 10                     |
|                        | 65 - 70                 | 1                      |
|                        | 70 - 75                 | 0                      |
|                        | > 75                    | 0                      |



|  |             |  |                       |
|--|-------------|--|-----------------------|
|  | < 50 dB(A)  |  | Edificio              |
|  | 50-55 dB(A) |  | Parcela               |
|  | 55-60 dB(A) |  | Barrera acústica      |
|  | 60-65 dB(A) |  | Límite administrativo |
|  | 65-70 dB(A) |  |                       |
|  | 70-75 dB(A) |  |                       |
|  | > 75 dB(A)  |  |                       |