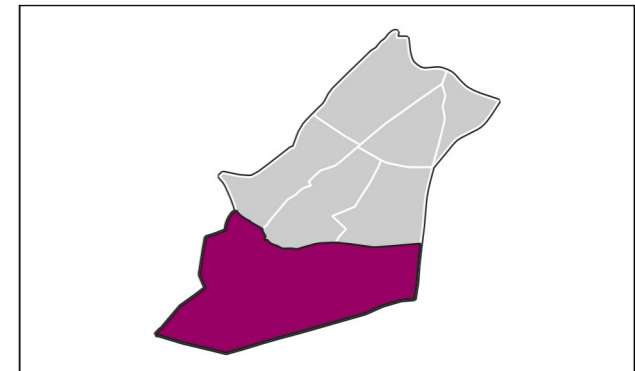


II Carabanchel

Ag_MAD_Madrid_C_Ld_11_6
8_1R_11_6



Población Expuesta

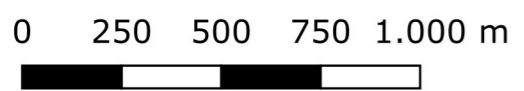
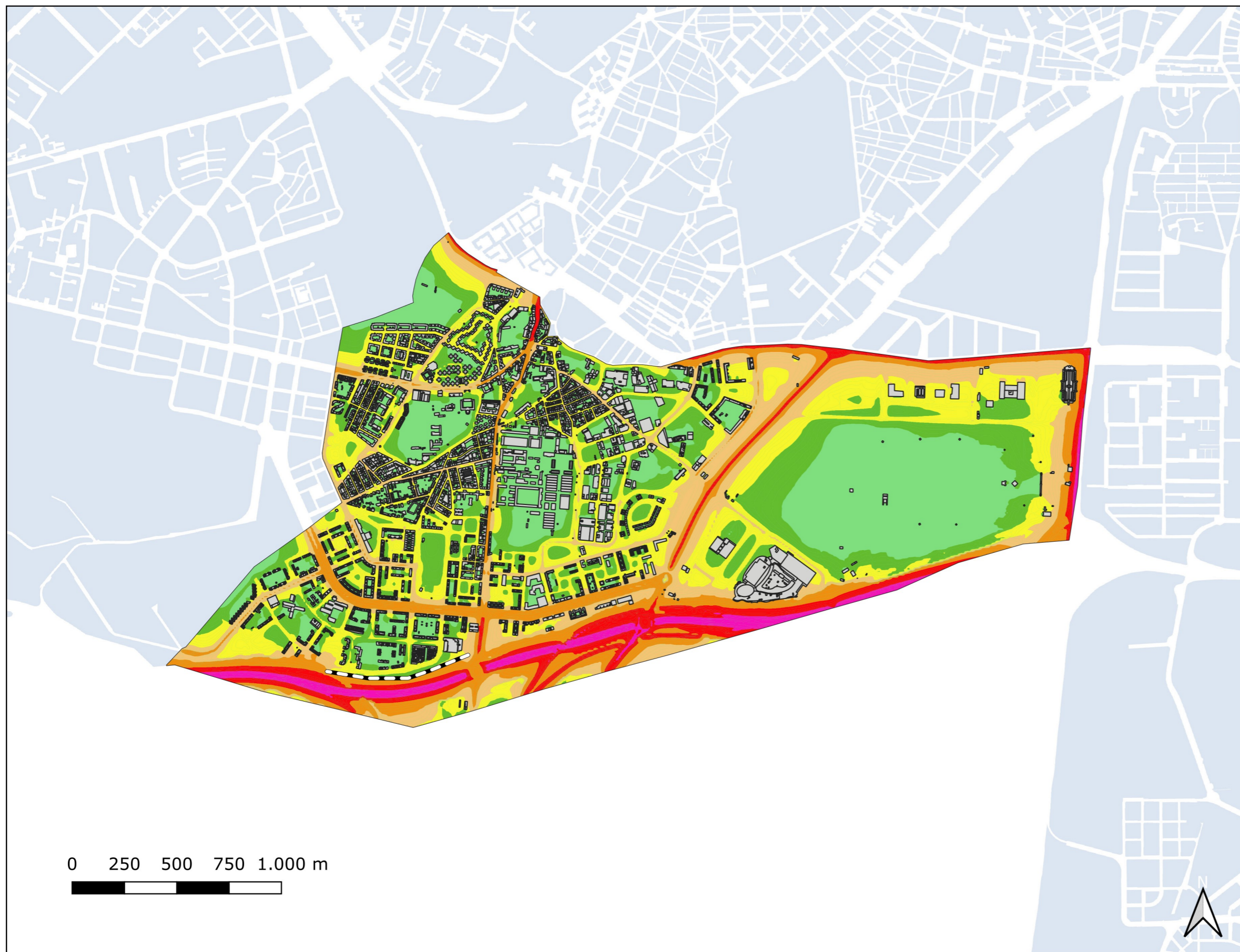
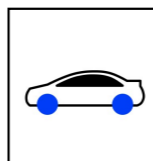
Barrio	L _d	
	Rango de Exposición dBA	Nº Personas (centenas)
11.6 Buenavista	< 55	255
	55 - 60	164
	60 - 65	48
	65 - 70	7
	70 - 75	1
	> 75	0



L_d

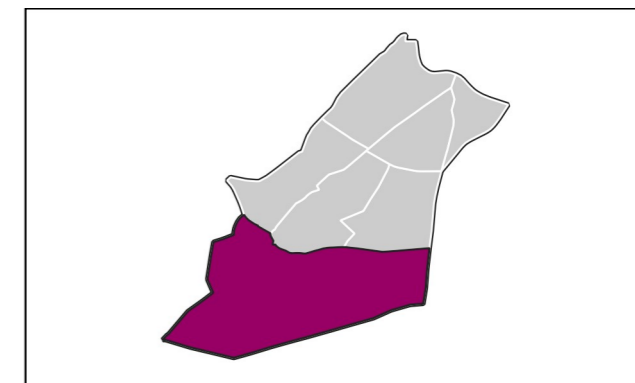
- < 50 dB(A)
- 50-55 dB(A)
- 55-60 dB(A)
- 60-65 dB(A)
- 65-70 dB(A)
- 70-75 dB(A)
- > 75 dB(A)

- Edificio
- Parcela
- Barrera acústica
- Límite administrativo

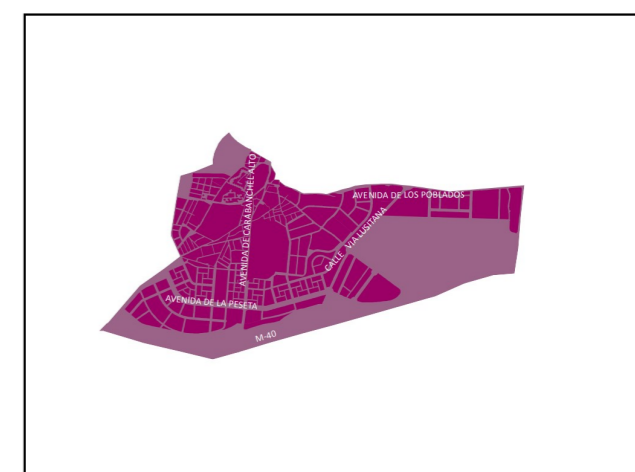


II Carabanchel

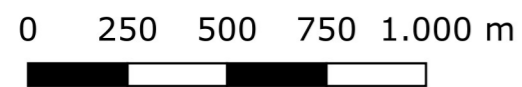
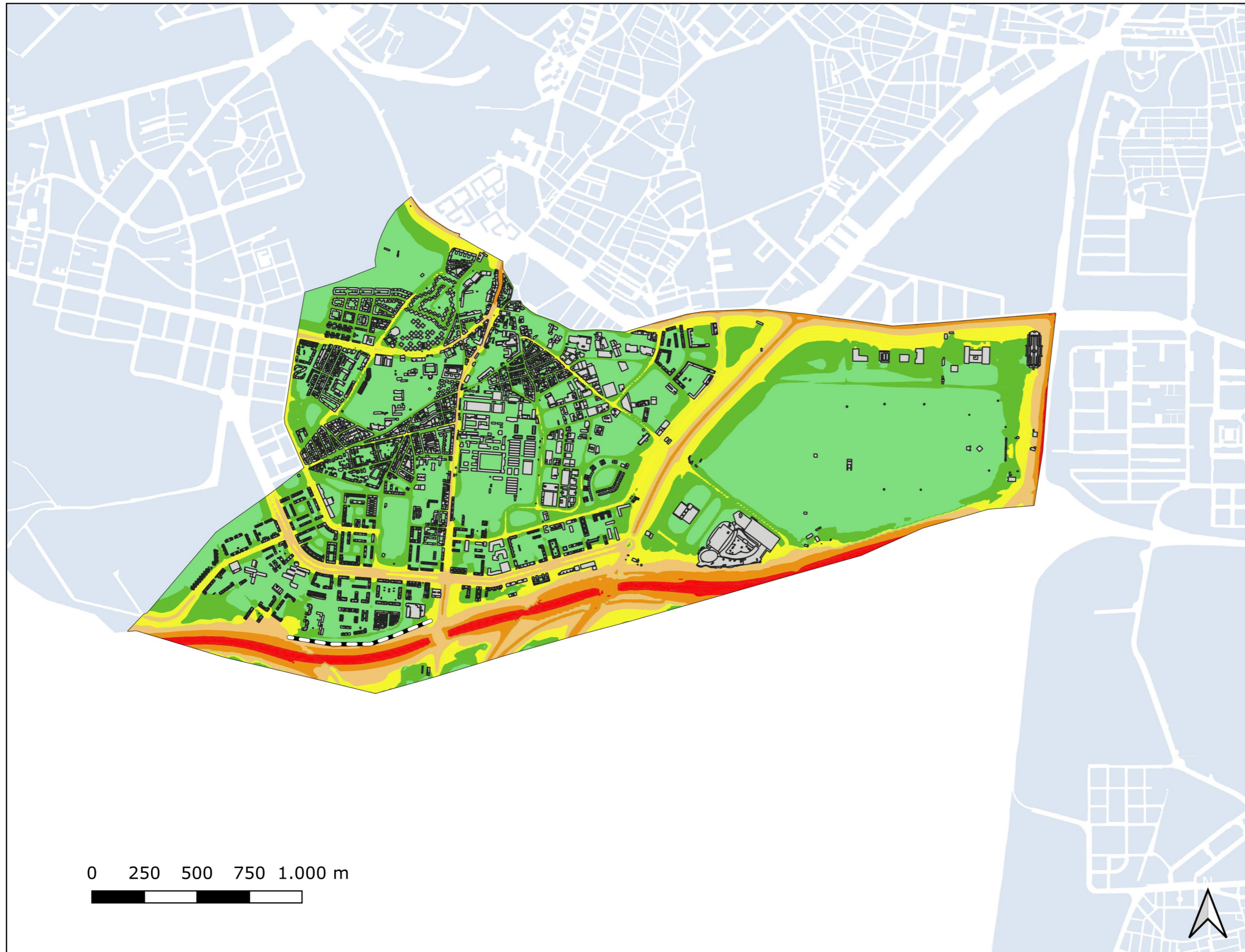
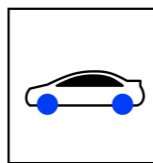
Ag_MAD_Madrid_C_Le_11_6
8_2R_11_6



Población Expuesta		
L_e		
Barrio	Rango de Exposición dBA	Nº Personas (centenas)
11.6 Buenavista	< 55	284
	55 - 60	146
	60 - 65	41
	65 - 70	2
	70 - 75	0
	> 75	0

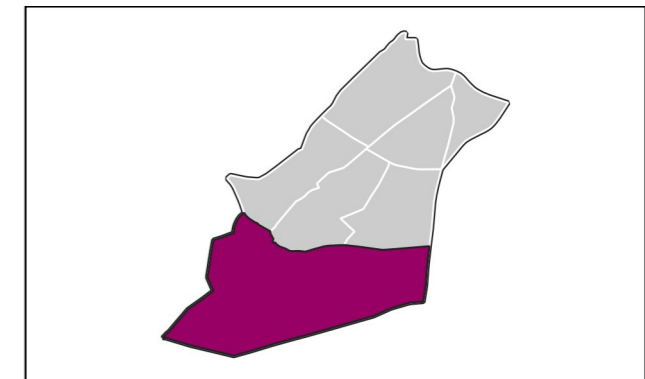


L_e < 50 dB(A)	Edificio
50-55 dB(A)	Parcela
55-60 dB(A)	Barrera acústica
60-65 dB(A)	Limite administrativo
65-70 dB(A)	
70-75 dB(A)	
> 75 dB(A)	



II Carabanchel

Ag_MAD_Madrid_C_Ln_11_6
8_3R_11_6



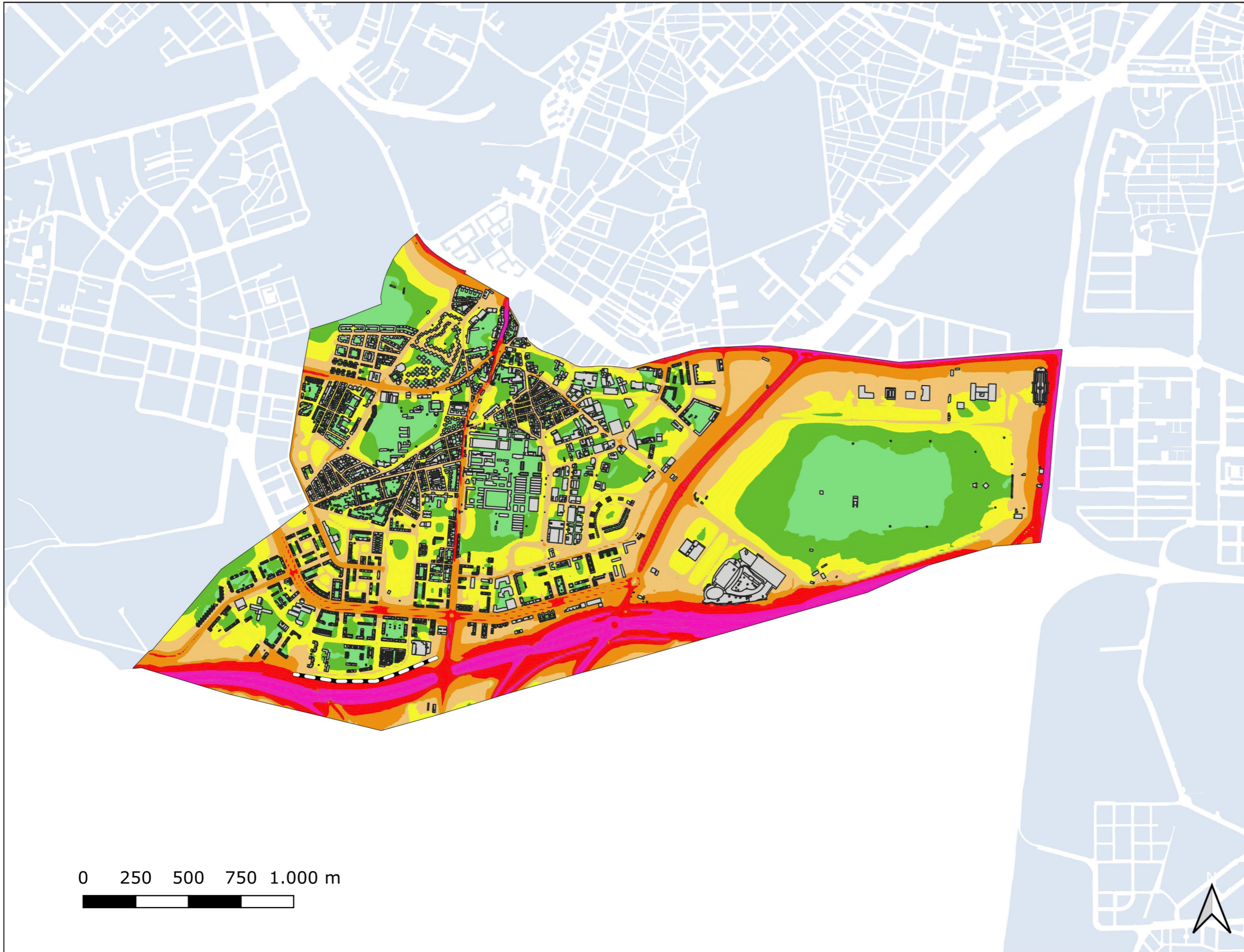
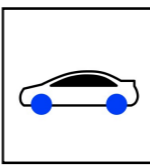
Población Expuesta		
L _n		
Barrio	Rango de Exposición dBA	Nº Personas (centenas)
11.6 Buenvista	< 50	340
	50 - 55	95
	55 - 60	36
	60 - 65	2
	65 - 70	0
	> 70	0



L_n

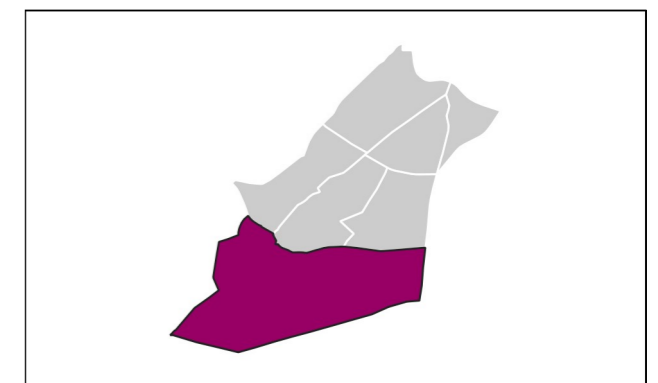
- < 50 dB(A)
- 50-55 dB(A)
- 55-60 dB(A)
- 60-65 dB(A)
- 65-70 dB(A)
- > 70 dB(A)

- Edificio
- Parcela
- Barrera acústica
- Límite administrativo

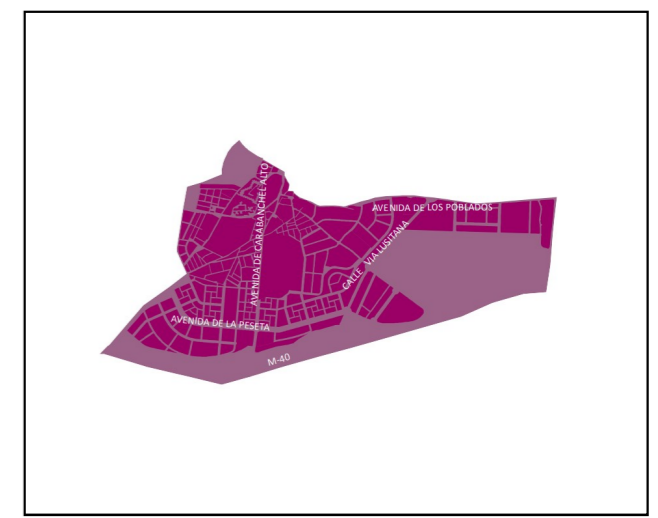


II Carabanchel

Ag_MAD_Madrid_C_Lden_11_6
8_4R_11_6



Población Expuesta		
Barrio	L_{den}	
	Rango de Exposición dBA	Nº Personas (centenas)
11.6 Buenavista	< 55	195
	55 - 60	188
	60 - 65	63
	65 - 70	26
	70 - 75	2
	> 75	0



< 50 dB(A)	Edificio
50-55 dB(A)	Parcela
55-60 dB(A)	Barrera acústica
60-65 dB(A)	Límite administrativo
65-70 dB(A)	
70-75 dB(A)	
> 75 dB(A)	